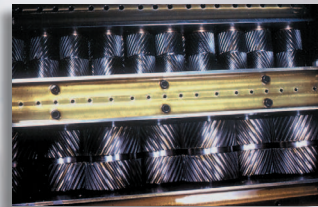
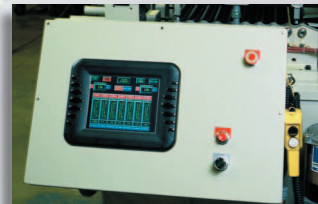




**LEVELERS**

PRECISION  
LEVELING SOLUTIONS

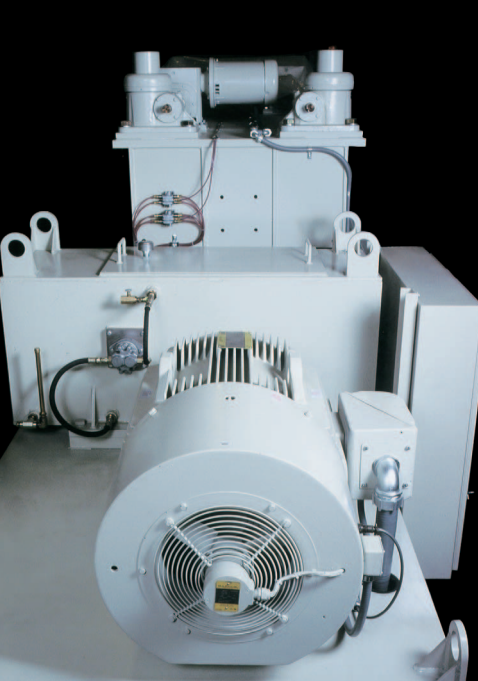


A Product of:  
**cooper-weymouth, peterson**  
A MEMBER OF THE FORMTEK GROUP

◆ A MESTEK COMPANY

**FORMTEK**

**ROWE** **B&K**  
**CoilMate®/Dickerman®**

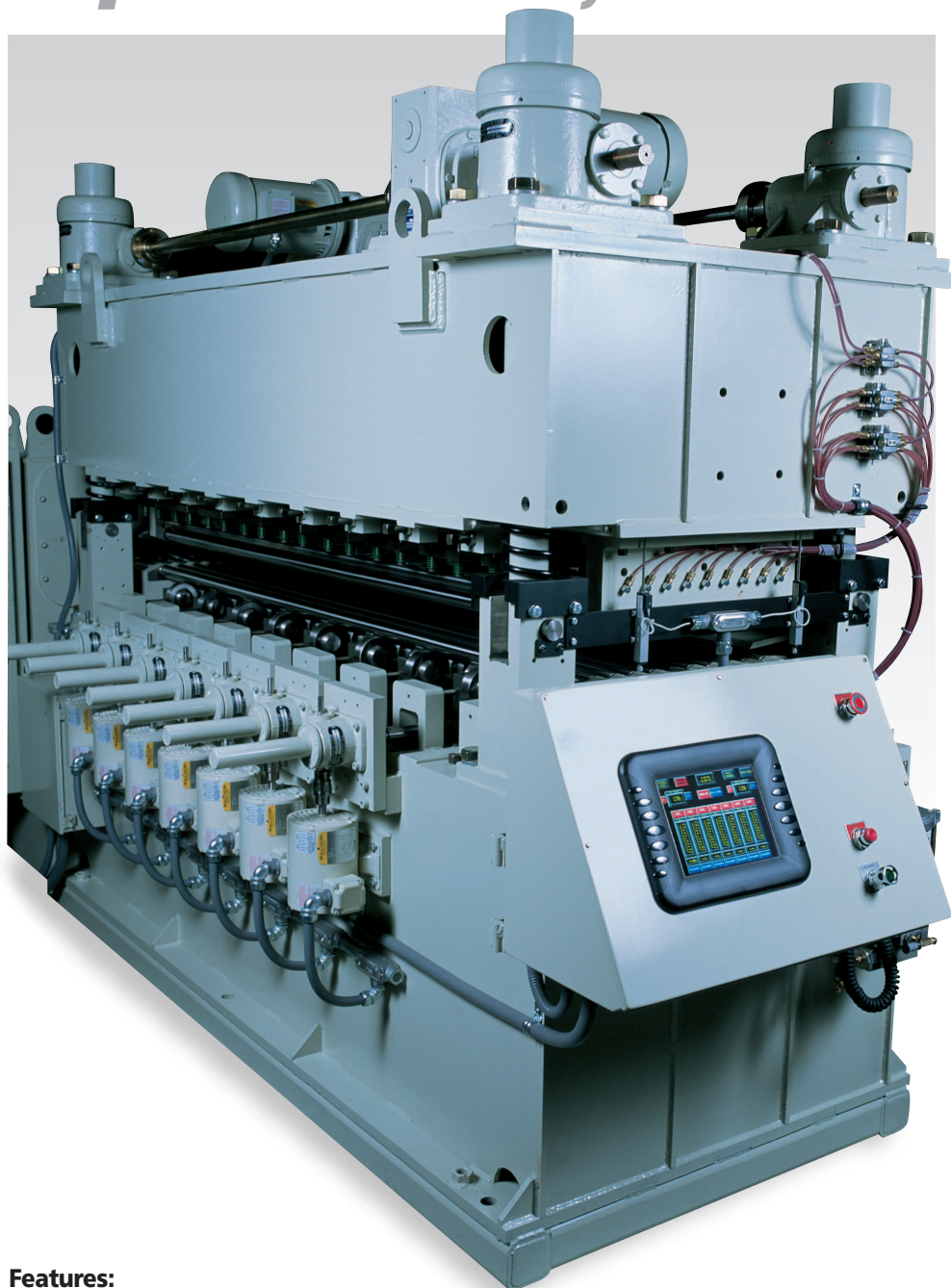


## B&K LEVELERS FOR GREATER LEVELING CONTROL.

B&K backed-up roller levelers are designed for precision coil strip flatness and shape correction. Advanced engineering makes this leveler a "one-operator" piece of equipment ideal for sheet leveling, parts leveling, cut-to-length lines and other applications. B&K levelers are the perfect solution to problems posed by coil set, cross bow, wavy edge and center buckled material.

B&K Precision Levelers, with standard 4-high and optional 5- or 6-high roll arrangements, compensate for "draw" in roll forming applications and eliminate "dished" stampings common in stamping processes. The result is dead-flat panel or strip for increased productivity and part quality.

*Superior flatness, no matter what*



### Features:

- Stress relieved, steel fabricated upper and lower roll housings
- Work rolls manufactured from Peterson 52100 material, cryogenically processed and heat treated to 62-64 Rockwell C scale
- Wedge-type adjustable back-ups
- Motorized lower back-up adjustment
- Manually adjustable upper back-ups
- Crowned back-up rolls
- Floating full-width back-ups on 5- and 6-high models
- Motorized upper bank adjustments
- Anti-backlash jacks for full tilt

- High lift head
- Gearbox with "Herringbone" gears and self-contained, gear-driven lubrication system
- Automatic lubrication system
- A/C closed loop Vector drive
- User-friendly, touchscreen control
- Material widths from 18" to 96"
- Two-Year Warranty

### Optional Features:

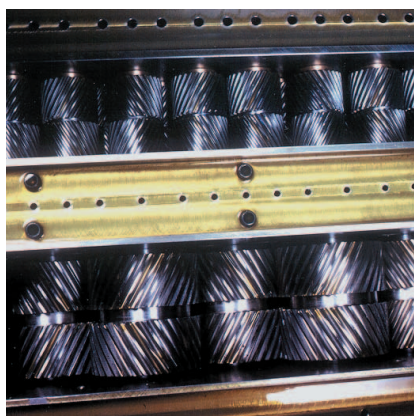
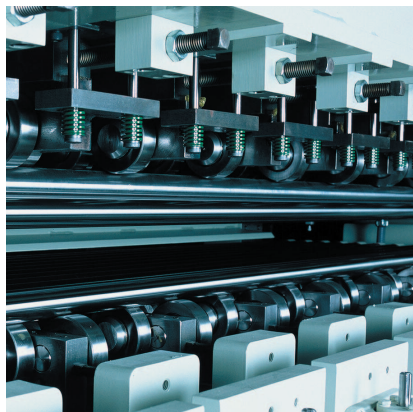
- Heavy-duty powered exit pinch rolls
- Heavy-duty powered entry pinch rolls
- Cassette cartridge work roll design
- Exit mounted inspection station



# What shape your coils are in.

## FULLY ADJUSTABLE BACK-UP ROLLS

Top and bottom back-up rolls facilitate greater leveling control. Back-up rolls are adjustable in order to control deflection of the work rolls to determine how and where the material is worked. Rugged roll housings are stress relieved and all steel fabricated.

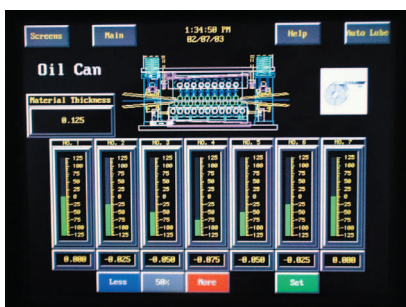
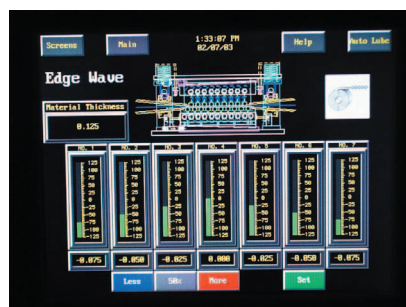
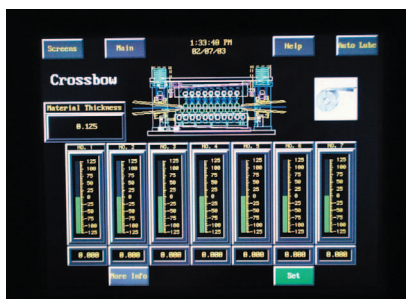
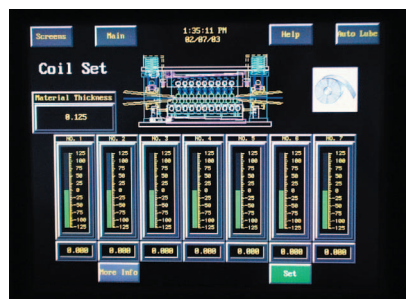


## HERRINGBONE GEAR BOX

Rolls are driven through a rugged, dependable herringbone gear box with a self-contained gear driven lubrication system. Herringbone gear drive system allows smooth performance and eliminates chatter for longer service life.

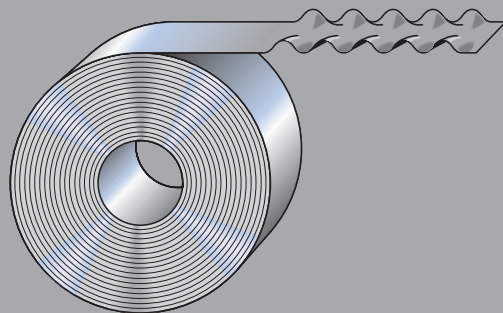
## INTUITIVE, TOUCHSCREEN CONTROL

Pictorial touchscreen control provides ease of set-up and operation — even for operators with marginal training. Provides entry & exit position graphs, adjustable back-up roll position graphs and digital readout of back-up roll position for precise work roll adjustment. Automatically recalls job settings to improve productivity. Complete with on-screen diagnostics, machine specifications and maintenance screens.



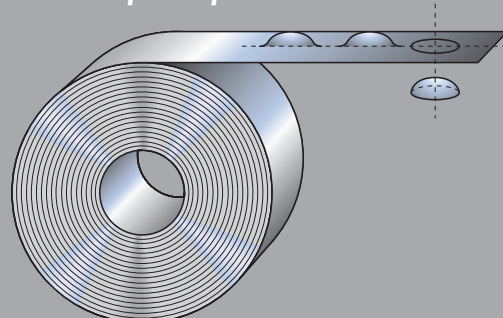
## INCOMPARABLE COIL STRIP CORRECTION

**B&K Levelers provide unmatched strip shape control over problems such as edgewave, center buckling, crossbow and coil set.**



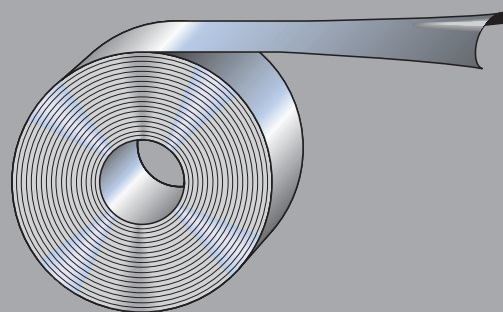
### EDGE WAVE

*Can be either eliminated or induced through back-up roll adjustment.*



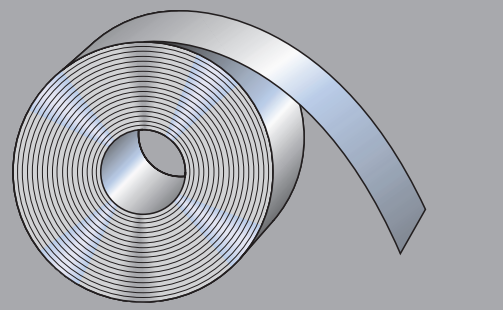
### CENTER BUCKLES

*Stubborn center buckles can be removed through back-up roll adjustment.*



### CROSS BOW

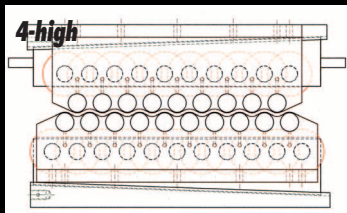
*Any inherent widthwise coil curvature can be removed with simple bank adjustment of leveler head.*



### COIL SET

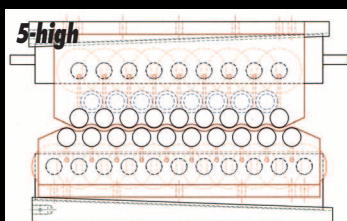
*Any inherent lengthwise coil curvature can be removed with simple bank adjustment of leveler head.*

# B&K High Performance TECHNOLOGY



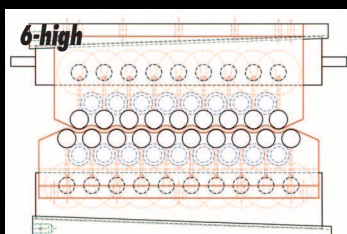
## 4-HIGH ROLL DESIGN

Standard roll set-up for B&K leveler. Consists of a set each of upper and lower work rolls and a set each of upper and lower back-up rollers.

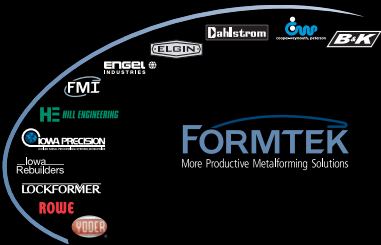


## 5- OR 6-HIGH ROLL DESIGNS

This set-up is used when surface-critical materials, such as soft aluminum, polished stainless and pre-painted surfaces. The 5-high roll design is utilized for materials with a surface-critical top side. The 6-high roll design is best suited when both sides of the material have a surface-critical finish.



A Product of:  
**cooper-weymouth, peterson**  
 Hinckley Road, Clinton, Maine 04927  
 (207) 426-2351 FAX: (207) 426-8868  
**Toll-Free 1-800-247-COIL**  
**www.cwpcoil.com**



**www.formtekinc.com**

LVL 303-5M

## EQUIPMENT SPECIFICATIONS

Model 1.156L B&K Precision Leveler					
Roll Diameter: 1.156"			No. of Rolls: 19		
Material Width:	24	36	48	60	72
Back-ups:	5	7	9	11	13
Adjustable:	3	5	7	9	11
Max. Thickness:	.078	.070	.062	.062	.054
Min. Thickness:	.010	.010	.010	.010	.015

Model 1.250L B&K Precision Leveler					
Roll Diameter: 1.250"			No. of Rolls: 19		
Material Width:	24	36	48	60	72
Back-ups:	5	7	9	11	13
Adjustable:	3	5	7	9	11
Max. Thickness:	.086	.078	.070	.070	.062
Min. Thickness:	.012	.012	.012	.012	.012

Model 1.500L B&K Precision Leveler					
Roll Diameter: 1.500"			No. of Rolls: 19		
Material Width:	24	36	48	60	72
Back-ups:	3	5	5	7	9
Adjustable:	1	3	3	5	7
Max. Thickness:	.093	.086	.078	.078	.078
Min. Thickness:	.015	.015	.015	.015	.015

Model 1.750L B&K Precision Leveler						
Roll Diameter: 1.750"			No. of Rolls: 19			
Material Width:	24	36	48	60	72	84
Back-ups:	3	5	5	7	9	11
Adjustable:	1	3	3	5	7	7
Max. Thickness:	.164	.156	.148	.140	.132	.125
Min. Thickness:	.021	.021	.021	.021	.021	.021

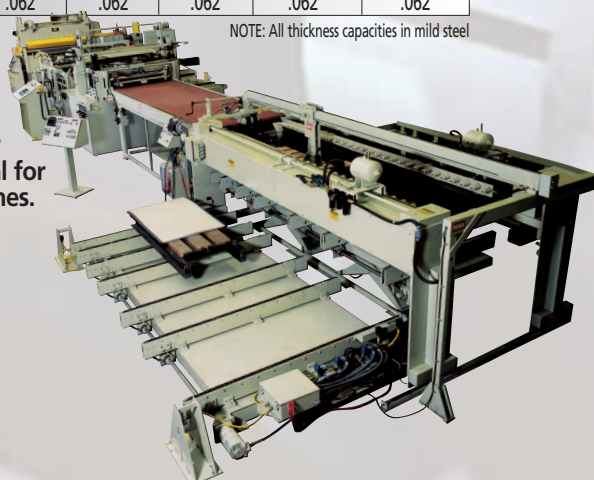
Model 2.250L B&K Precision Leveler						
Roll Diameter: 2.250"			No. of Rolls: 17			
Material Width:	24	36	48	60	72	84
Back-ups:	3	5	5	7	9	11
Adjustable:	1	3	3	5	7	9
Max. Thickness:	.194	.187	.180	.164	.156	.140
Min. Thickness:	.036	.036	.036	.036	.036	.036

Model 3.000L B&K Precision Leveler						
Roll Diameter: 3.000"			No. of Rolls: 17			
Material Width:	36	48	60	72	84	96
Back-ups:	5	5	7	9	11	13
Adjustable:	3	3	5	7	9	11
Max. Thickness:	.281	.265	.250	.234	.210	.187
Min. Thickness:	.048	.048	.048	.048	.048	.048

Model 3.500L B&K Precision Leveler					
Roll Diameter: 3.500"			No. of Rolls: 17		
Material Width:	48	60	72	84	96
Back-ups:	5	5	7	9	11
Adjustable:	3	3	5	7	9
Max. Thickness:	.328	.320	.312	.296	.281
Min. Thickness:	.062	.062	.062	.062	.062

NOTE: All thickness capacities in mild steel

**B&K Precision Backed-Up Roller Levelers Are Ideal for Cut-To-Length Lines.**



◆ A MESTEK COMPANY